



Islay Energy Trust

An introduction to the Islay Energy Trust

Aims

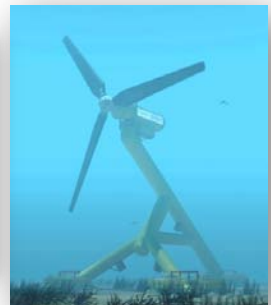
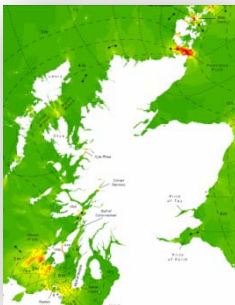
The Islay Energy Trust (IET) is a community-owned charity whose aim is to develop and operate renewable energy projects for the benefit of the community.

Background

IET was incorporated in 2004 and is managed by a Board of Trustees which is elected by members of the Company.

Anyone over the age of 17 who lives or has property on Islay can become a voting member of the Company. Anyone who is not eligible to become a voting member can join as a non-voting Associate Member.

In July 2011 there were almost 300 members of IET. Please get in touch if you would like to join.



What does IET do?

Community Renewable Energy Projects

Development and operation of small to medium scale community renewable projects. Technologies being investigated include wind, hydro, and solar.

Income generated from these projects will be paid into a trust fund for the distribution to local voluntary and charitable organisations.

Generates income
Reduces carbon emissions

Large-Scale Marine Renewables Projects

The seas around Islay have some of Europe's best tidal, wave and offshore wind resources.

IET aims to work with developers as partner/investor/service provider to maximise the benefits and minimise the negative impacts of large-scale (>5MW) renewables.

Creates employment
Develops local economy
Generates income
Reduces carbon emissions

Community and Small Business Carbon Savings

IET aims to reduce Islay's carbon footprint through insulation, energy efficiency and micro-renewables.

As well as reducing carbon emissions, the benefits include lower fuel bills for businesses and community buildings.

Reduces carbon emissions
Reduces fuel costs

Current Projects

Sound of Islay Tidal Energy Project

IET is working with ScottishPower Renewables (SPR) on the 10MW Sound of Islay Tidal Energy Project. The project received consent from the Scottish Government in March 2011.

IET employs a Tidal Energy Project Officer, Andy Macdonald to provide support services to SPR and to maximize the benefits of the project to the local community.



RACES Project

Following the success of the two-year Carbon Savings Project, IET received a further year's funding from the Climate Challenge Fund to undertake planning and development work on a number of renewable energy projects.

RACES employs a full time Project Officer, Lindy MacLellan, and also provides advice to small businesses as well as helping to make a number of community buildings more energy-efficient.



ARC and Community Investment Fund Studies

ARC ("Argyll Renewables Communities") has commissioned a report on the socio-economic impacts of the proposed Islay and Tiree offshore wind farms.

The Big Lottery has funded a study into the establishment of a community investment fund which would enable communities and individuals to benefit from investment in renewable energy projects. The report is expected by the end of August 2011.



Further Information

Address Custom House, Main Street, Bowmore, Islay PA43 7JJ

Website The latest information about the Islay Energy Trust can be found at our website: www.islayenergytrust.org.uk

Facebook If you use Facebook then you can show your support and get updates by going to our Facebook page and clicking on the 'Like' button. www.facebook.com/islayenergy

People



Philip Maxwell

Chairman, Islay Energy Trust
philip.maxwell@islayenergytrust.org.uk



Lindy MacLellan

RACES Project Officer
lindy.maclellan@islayenergytrust.org.uk
01496 301 413



Andrew Macdonald

Tidal Energy Project Officer
andrew.macdonald@islayenergytrust.org.uk
01496 810 873



Geunda Young

Office Manager, Islay Energy Trust
geunda.young@islayenergytrust.org.uk

Argyll Renewable Communities (ARC) is supported by the Argyll and the Islands LEADER Programme, HIE, RSPB Scotland, SNH and ScottishPower Renewables.

The RACES Project is supported by the Climate Challenge Fund



*Islay Energy Trust is a charitable limited company.
Company Number 285020, Charity Number SC037819*