



**Turbine Operating Report  
January – September  
2018**

## Turbine output since commissioning

2015 ( <i>9 months</i> )	1,059,178 kWhs
2016	1,169,171 kWhs
2017	1,192,834 kWhs
2017 ( <i>to end Sept</i> )	903,232 kWhs
2018 ( <i>to end Sept</i> )	814,028 kWhs

Original Business Plan anticipated 1,041,000 kWhs p.a.

# Energy Yield 2017 vs 2018

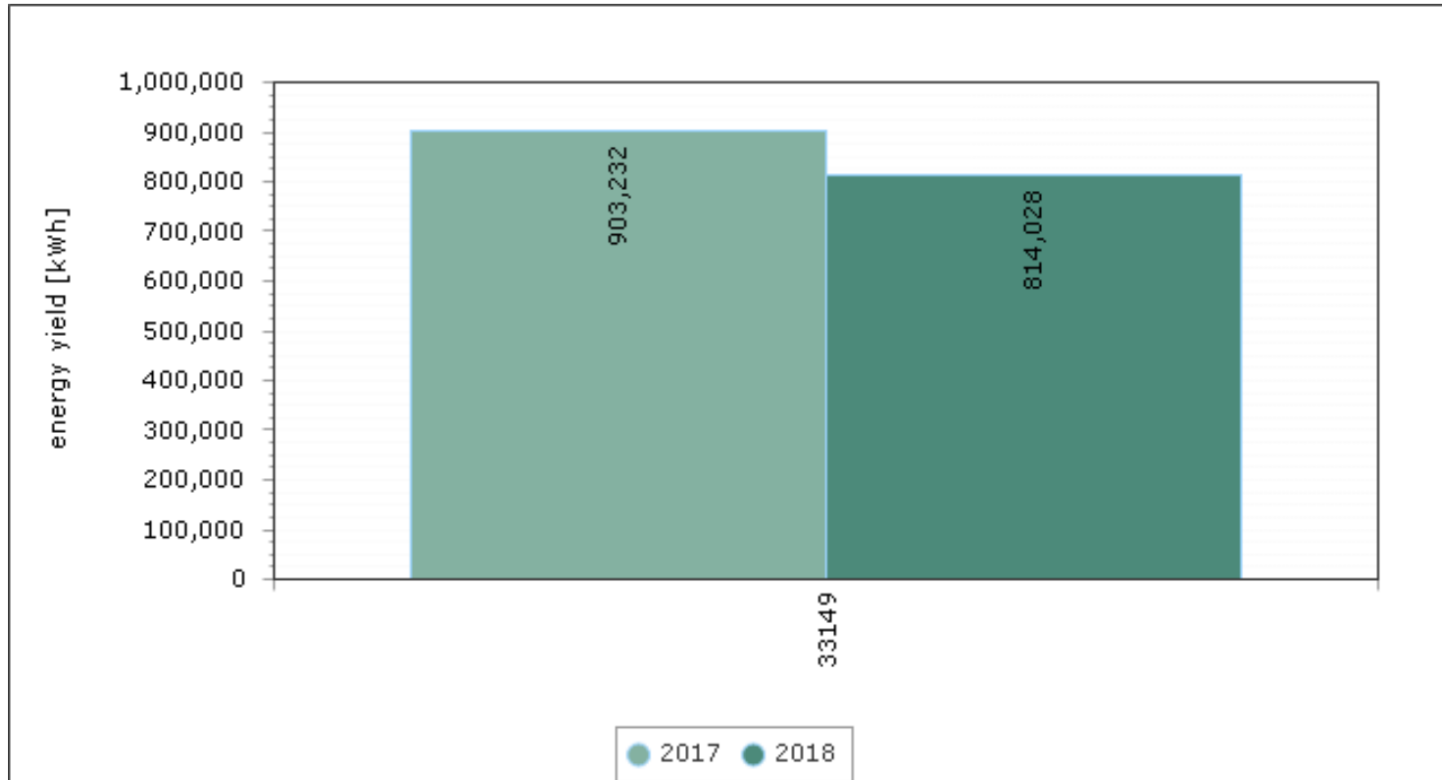


Diagram: Total yield per plant in reporting period compared to previous year

## Monthly Yield 2017 vs 2018

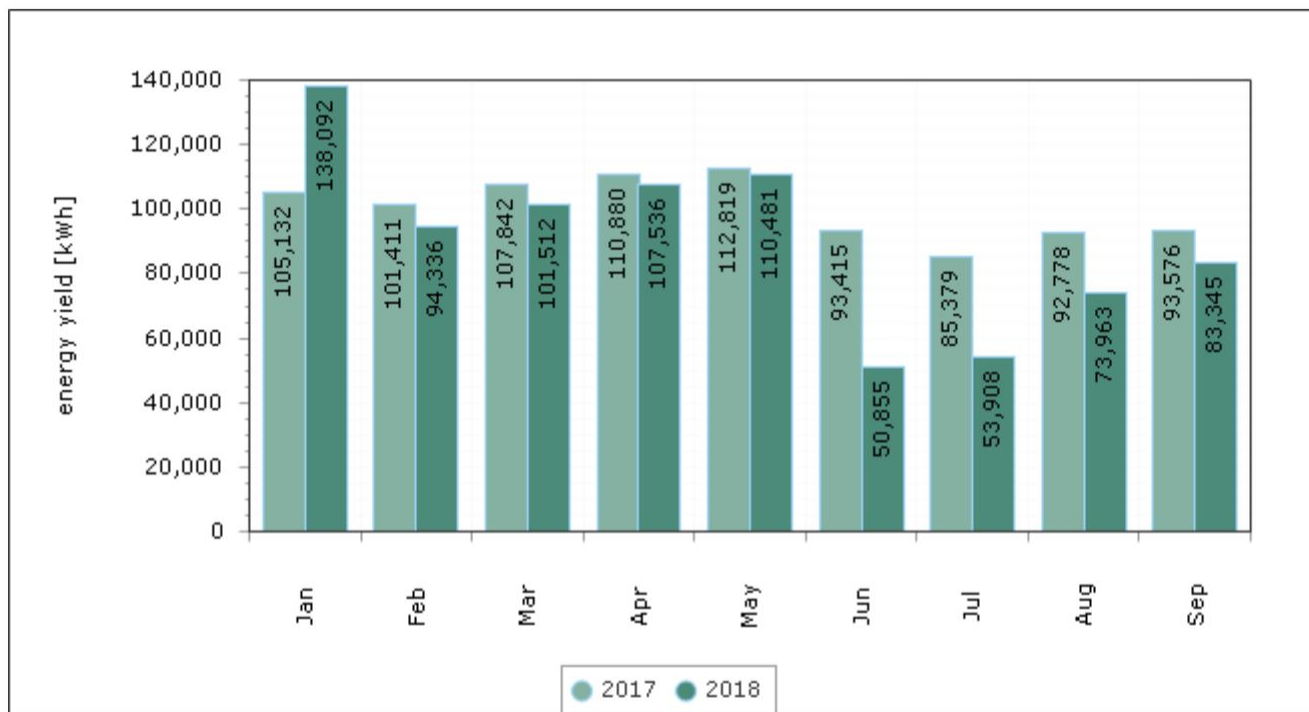
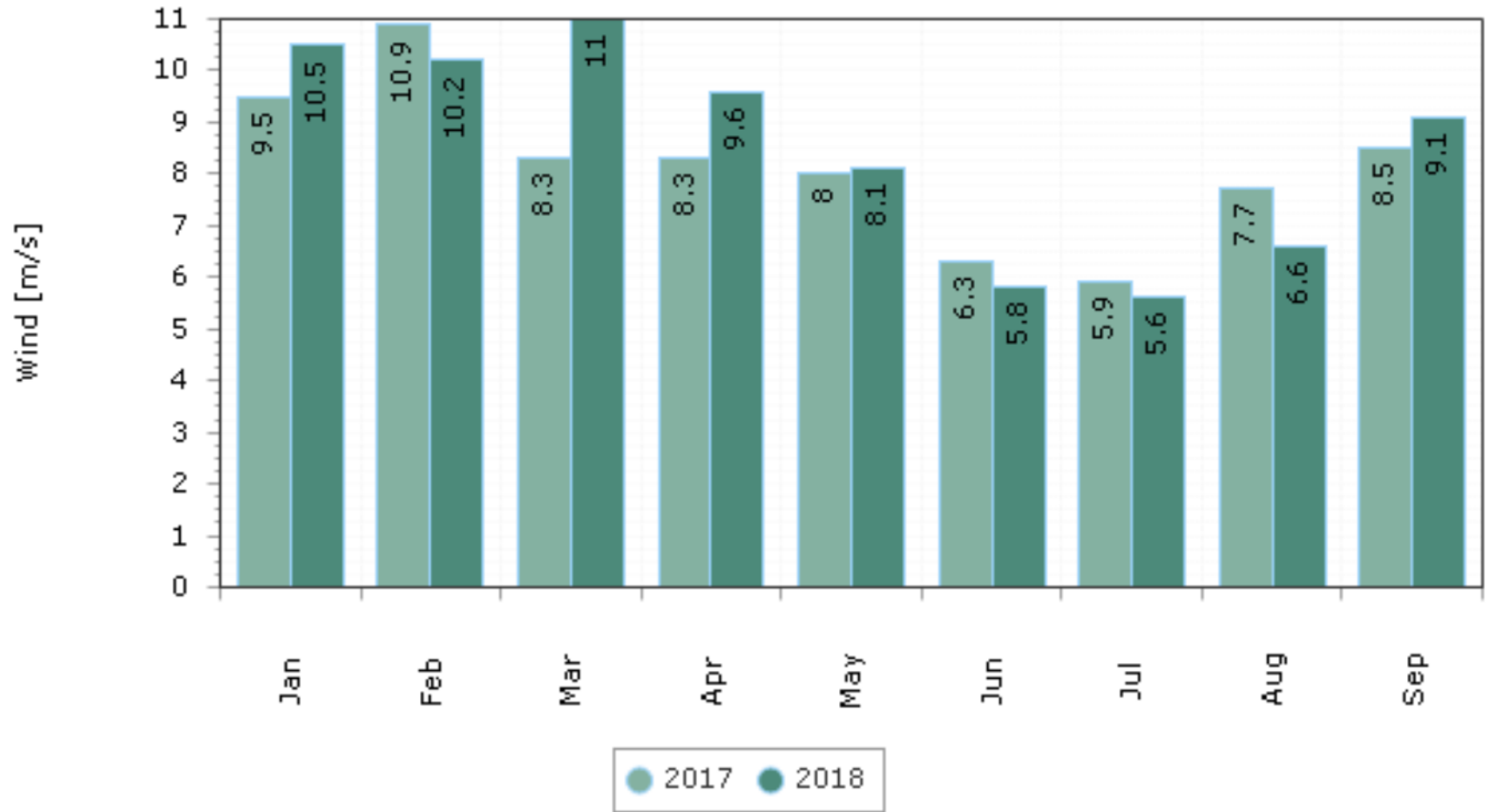


Diagram: Total yield per month compared to previous year

June & July 2018 – very low output due to Summer weather

Technical availability below standard in September 2018

# MONTHLY WIND SPEED 2017 vs 2018



Average wind speed per month compared to previous year

## What IET does for the turbine project

- ❑ All administration, monitoring, accounting and reporting on behalf of IECBS, under an Operating Services Agreement
- ❑ The OSA includes liaison with Enercon regarding maintenance, fault investigation and rectification
- ❑ Also studies of options to improve income (*eg generation meter, localised supply options, power purchase agreements*)
- ❑ IET receives surplus turbine income under a Deed of Covenant and manages the Islay Energy Community Benefit Fund

